

## Satellite Main Features

### Satellite

Launch Mass: 715 kg  
Solar Generator Power: 840 W  
3 axis agile, accurate and stable attitude control  
Gyro / stellar attitude determination

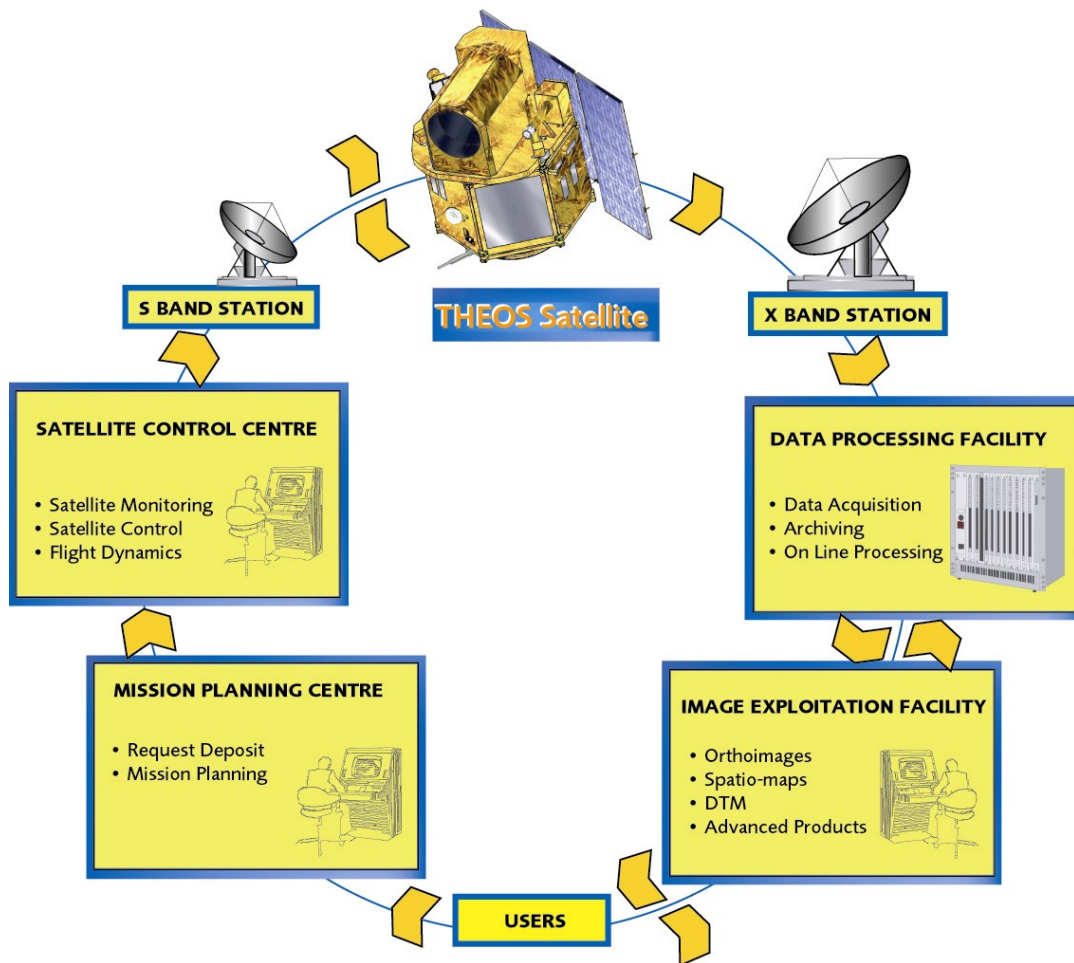
### Full Silicone Carbide Panchromatic Telescope

High Resolution: 2m  
Field of view: 22 km

### Refractive Optics Multispectral Instrument

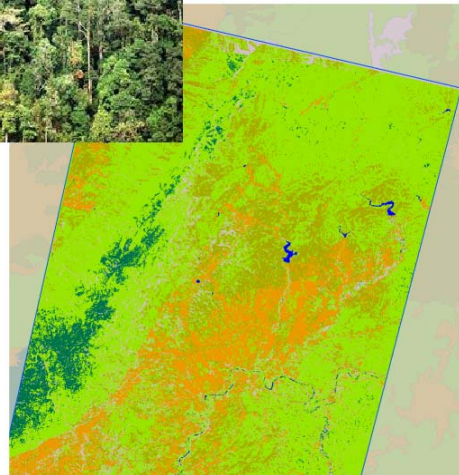
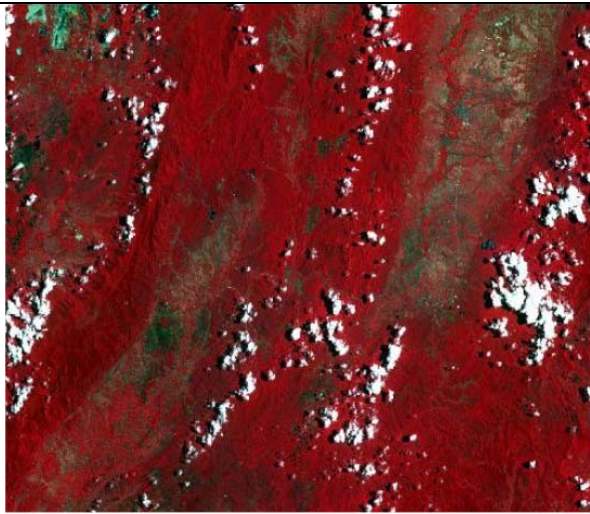
Wide Field of view: 90 km  
Resolution: 15 m  
4 colour channels: [0.45 – 0.9]  $\mu\text{m}$

*THEOS: from User request to Image Product delivery.*





*THEOS images will enable the **Department** of Fisheries to observe hundreds of km of coastline within one image with a level of detail enabling accurate monitoring of shrimp farm activities*



*The THEOS system will enable the National Parks **Department** to observe seasonal development of vegetation in forested areas (several images per season over large areas) and to map forest types as well as burnt areas at 1:25 000 scale. Over sensitive areas, a revisit frequency of less than 6 days makes it possible to monitor very brief or sudden phenomena.*